

# Cancer Screening Awareness

Milwaukee Consortium for Hmong Health

Hmong Health Conference

New Life Hmong Alliance Church

April 13, 2013

Yer Moua Xiong, MD, MPH

# *Kuv Yog Leej Twg?*

- Yer Moua Xiong
- University of Minnesota Medical School
- Bay View Family Health Center
- Family Doctor
  - Take care of entire family, from babies to the elderly
  - Take care of pregnant women and deliver babies

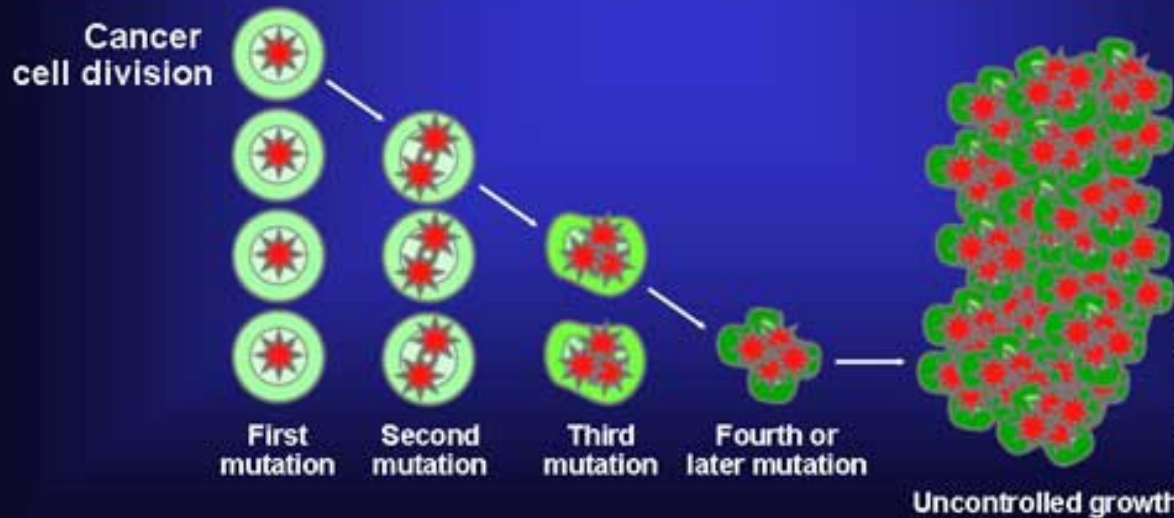
# Objectives

At the end of this talk, the participant will become more familiar with:

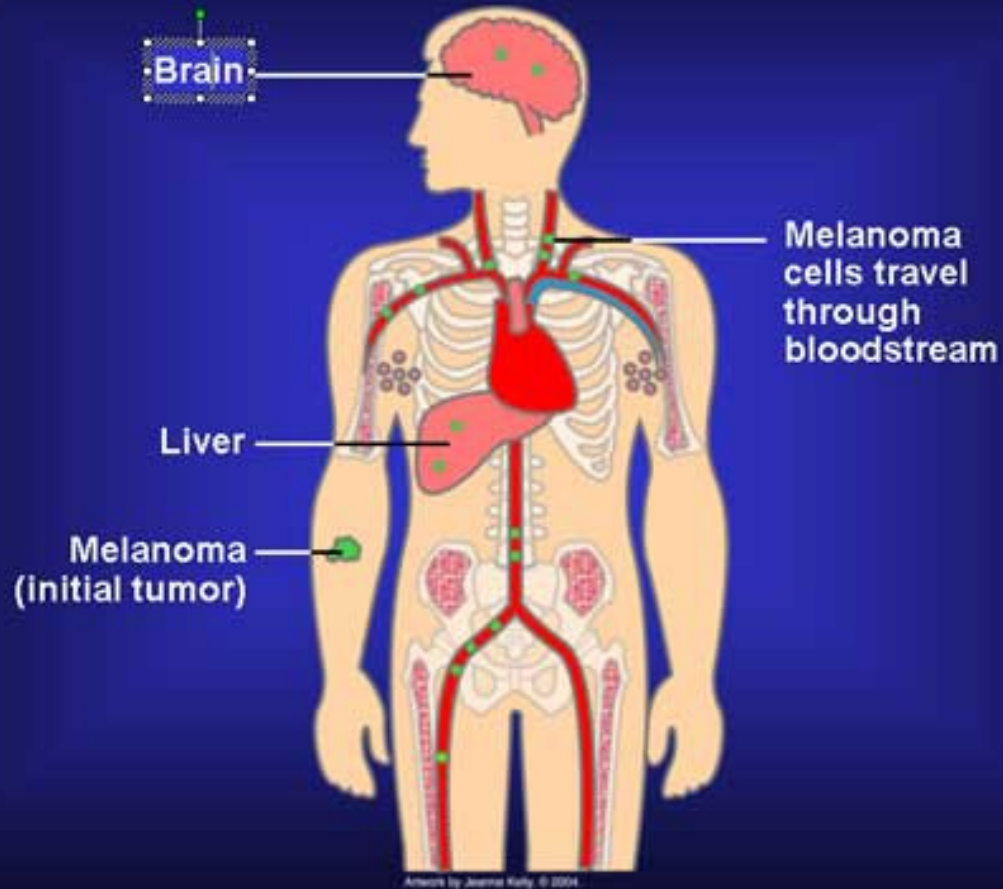
- The term “cancer” and what it means
- How cancer affects the Hmong community, particularly women
- Screening recommendations and the importance of screening

# What is Cancer?

## Loss of Normal Growth Control



# Why Cancer Is Potentially Dangerous



<http://www.cancer.gov/cancertopics/understandingcancer/cancer/page10>

# Is It Serious?

- According to the National Cancer Institute (2012)
  - 1,638,910 men and women
    - diagnosed with all cancers
  - 577,190 men and women will die of cancer

# Risk Factors for Cancer

- Growing older
- Tobacco
- Sunlight
- Certain chemicals and other substances

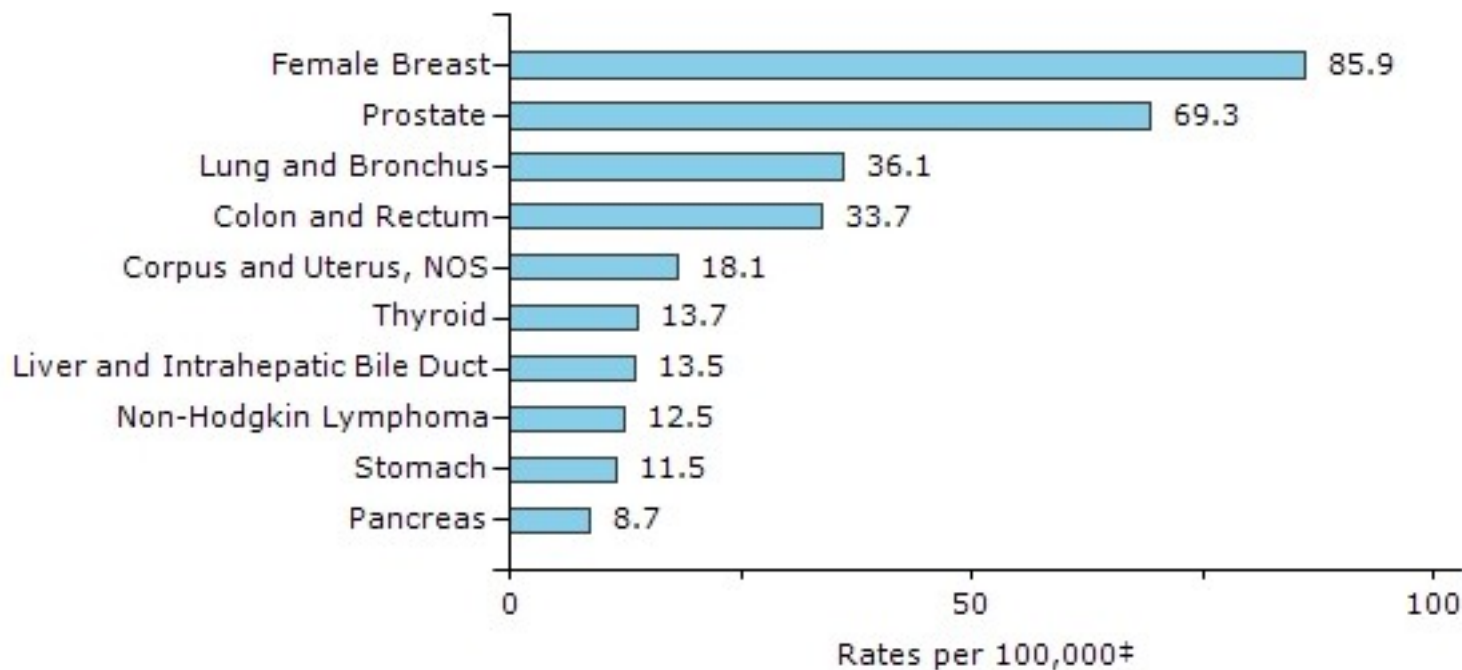
# Risk Factors for Cancer

- Some *viruses* and *bacteria*
- Family history of cancer
- Alcohol
- Poor diet, lack of physical activity, or being overweight



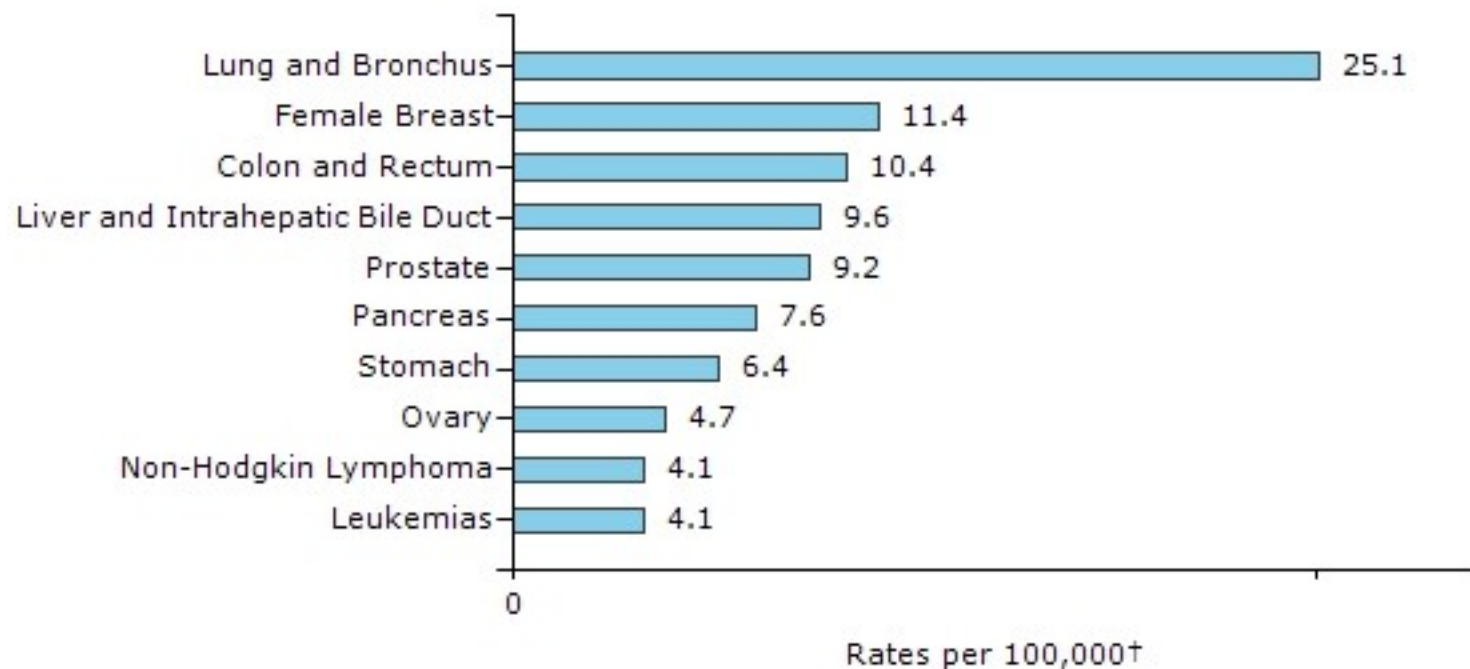
# Top Cancer Cases: Asian/Pacific Islander Men and Women, 2009

**Top 10 Cancer Sites: 2009, Male and Female, United States—Asian/Pacific Islander**

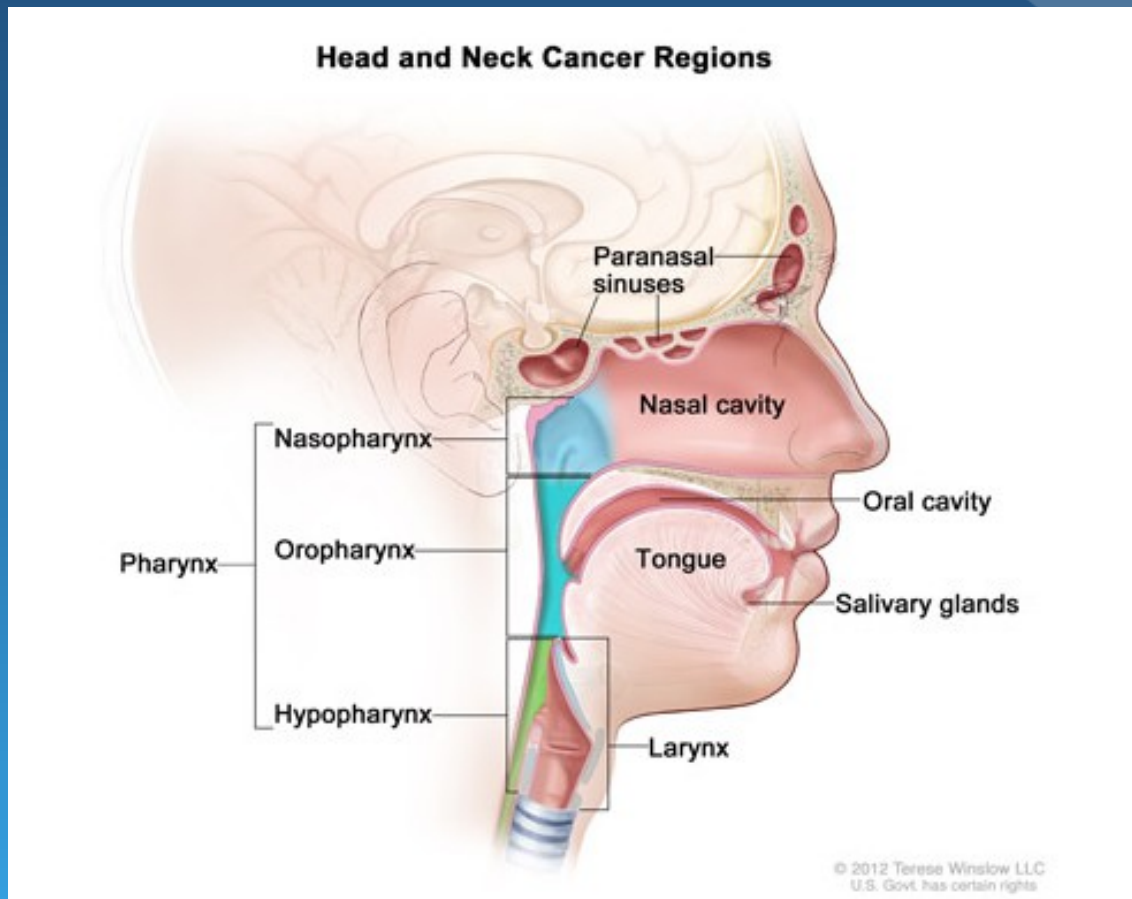


# Top Cancer Deaths: Asian/Pacific Island Men and Women, 2009

**Top 10 Cancer Sites: 2009, Male and Female, United States—Asian/Pacific Islander**

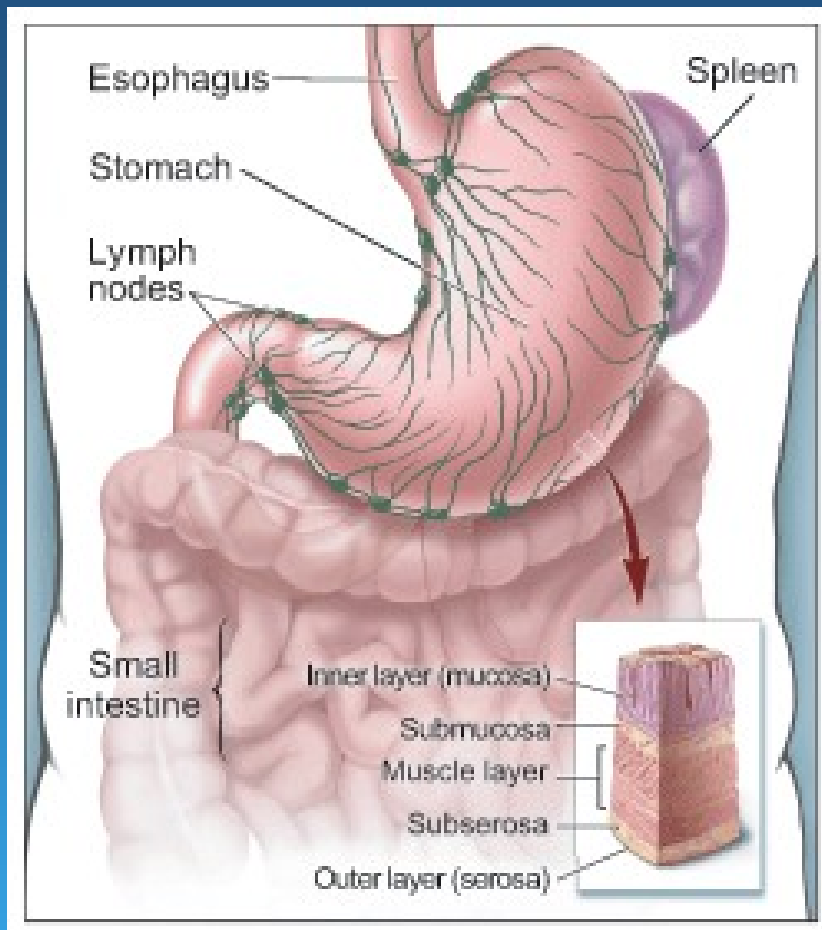


# Most Common Cancers: Among in Minnesota

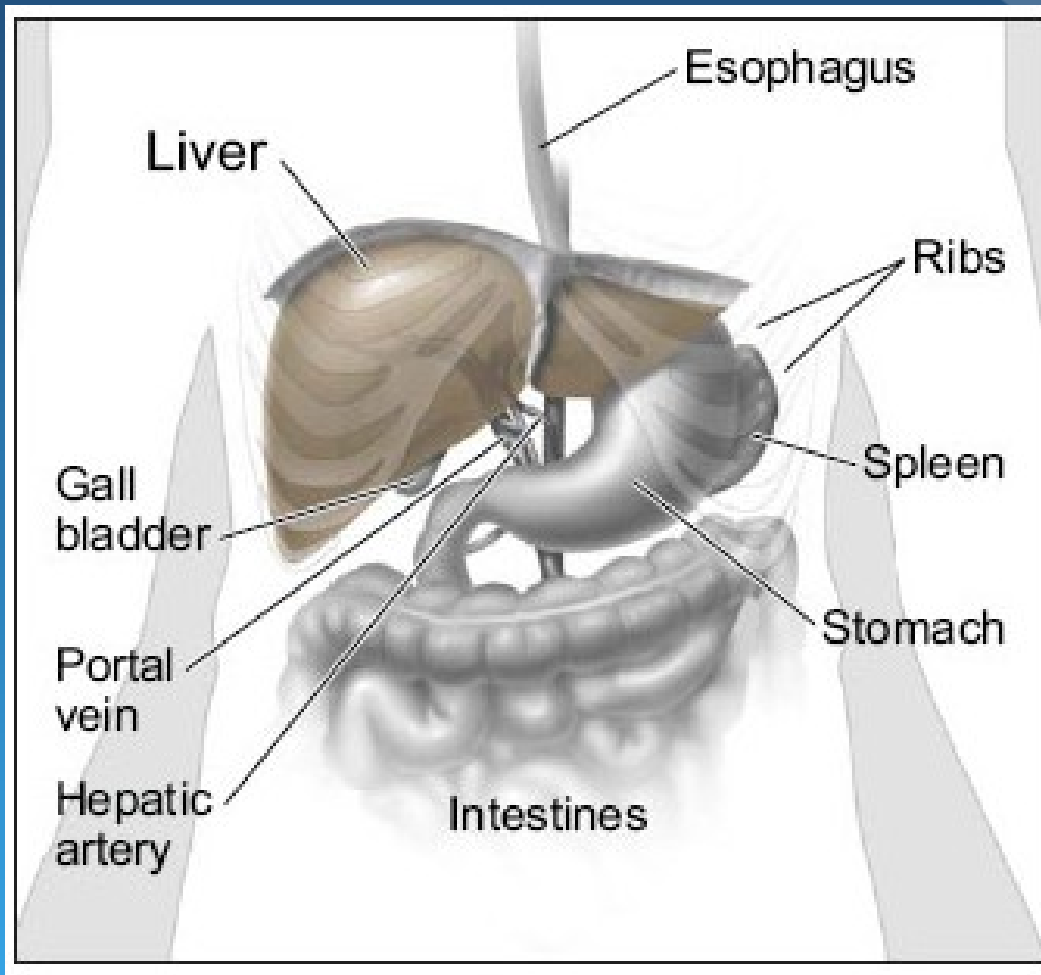


<http://www.cancer.gov/cancertopics/factsheet/Sites-Types/head-and-neck>

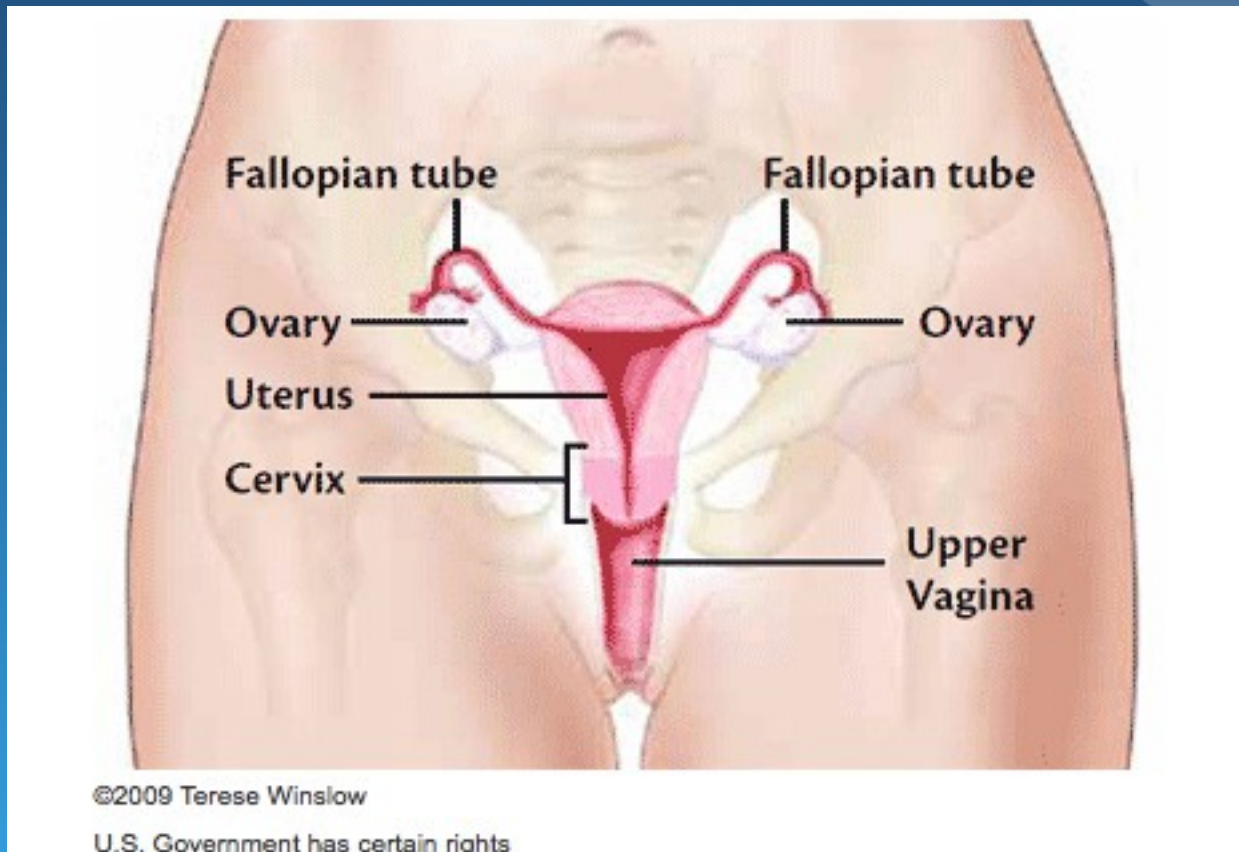
# Most Common Cancers: Among in Minnesota



# Most Common Cancers: Among in Minnesota



# Most Common Cancers: Among in Minnesota



<http://www.cancer.gov/cancertopics/wyntk/cervix/page2>

# Xub Nrhiav Tau, Xub Kho Tau

## Screening and Prevention

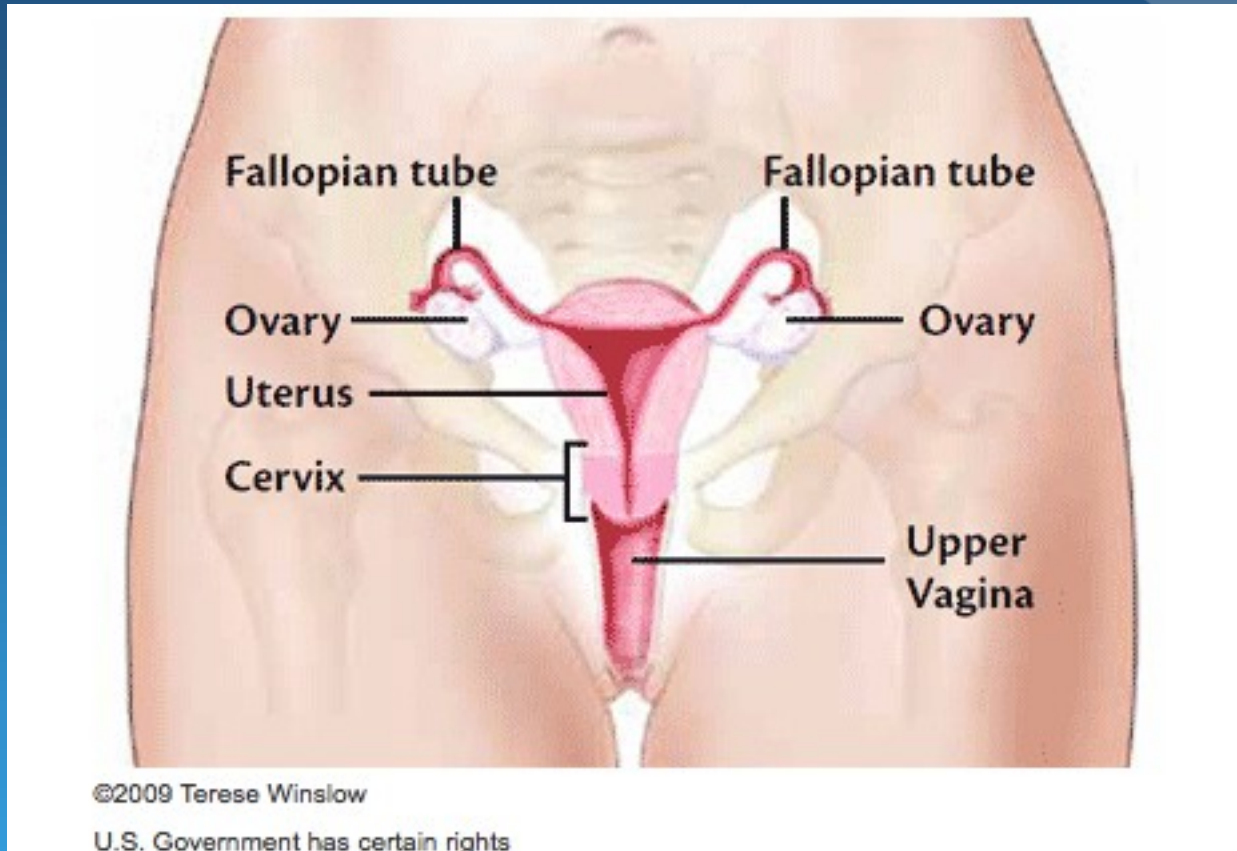
- Muaj ntau yam cancer
- Muaj tsawg yam kuaj tau
  - Kuaj ncauj tsev menyuam
  - Kuaj mis

# Cancer and the Hmong Community, Wisconsin

- Wisconsin Comprehensive Cancer Control Program
- 34% of cancers in Hmong diagnosed at distant stages compared with 21% among Whites (1995-2007)
- Diagnosis of cancer in younger ages in Hmong (34% under age 40 compared with 5% in Whites)



# Cancer Ncauj Tsev Menyuum



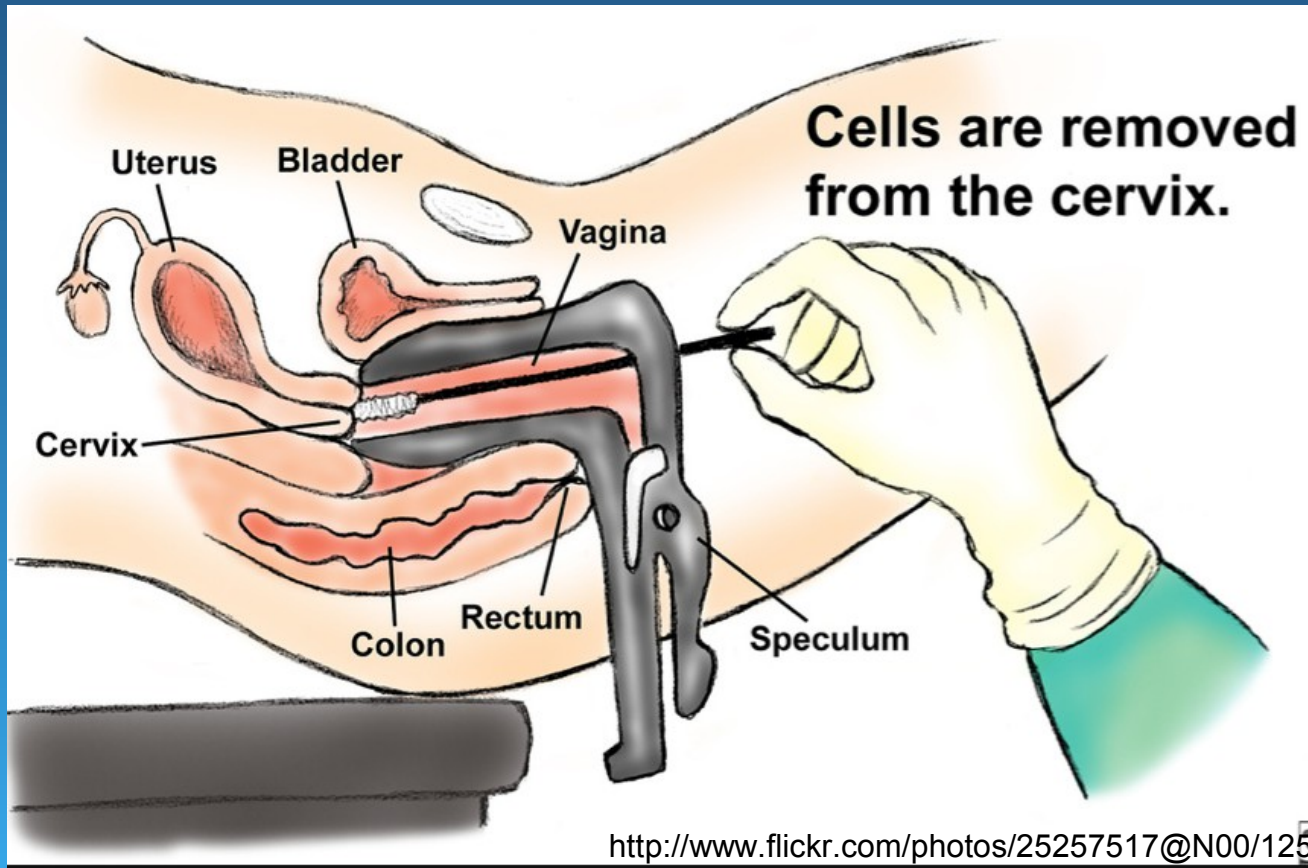
<http://www.cancer.gov/cancertopics/wyntk/cervix/page2>

# Cancer Ncauj Tsev Menyuam

- A few studies reviewing cases of cancer in Hmong community
  - California 1987 to 1994
  - 183 cases of cancer newly diagnosed
  - Of these → 37 were cervical cancer → of these, 22 cases were invasive
  - Average age at diagnosis of cervical cancer: 42
  - When found more cases: INVASIVE than in other races

# Kuaj Li Cas?

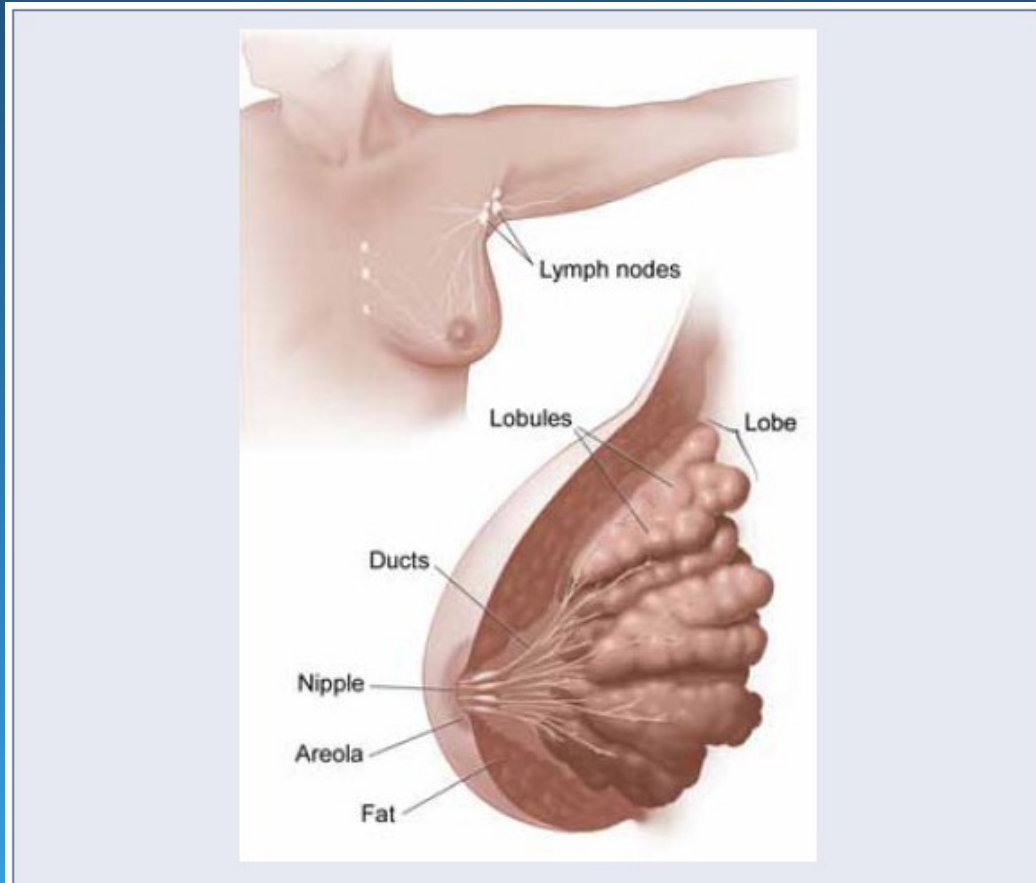
- Pap smear:



# Cancer Ncauj Tsev Menyauam

- Human papilloma virus (HPV)
  - Kis tau thaum ua niam txiv
    - Thaum hluas: nws zoo nws tau
    - Yog tsis zoo
      - Mob cancer tau
  - Txhaj tshuaj: Get vaccinated

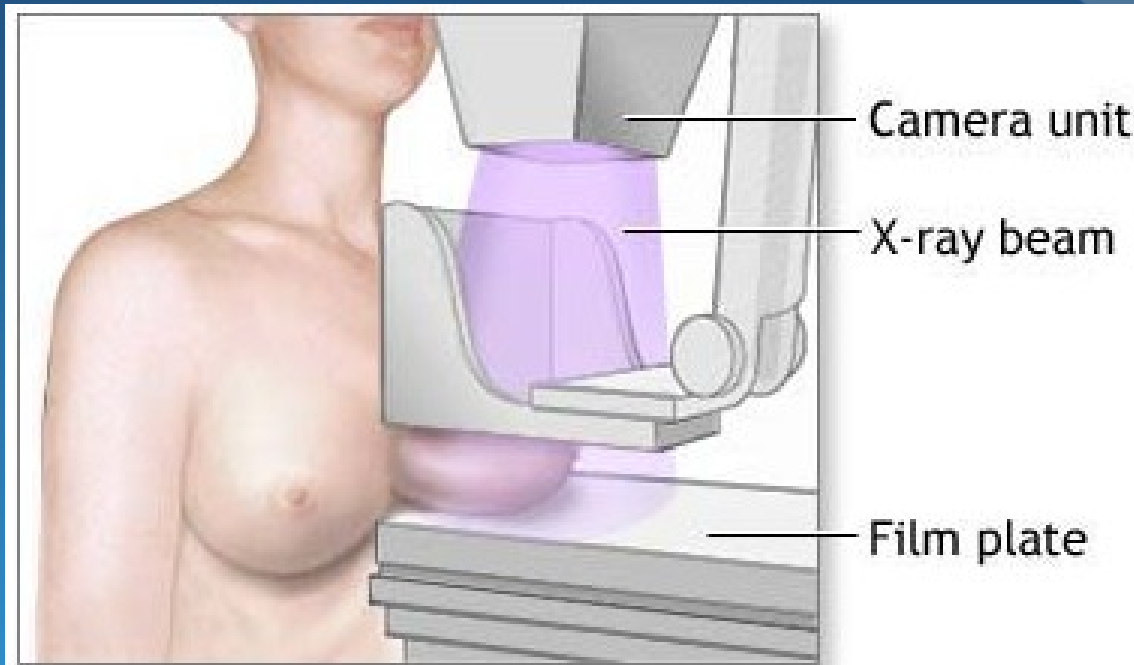
# Cancer Poj Niam Mis



# Cancer Poj Niam Mis

- Wisconsin (2007)\*
  - New cases of breast cancer: 4031
  - Deaths due to breast cancer: 723
    - Asian/Pacific Islander: 36
- Breast cancer: #1 diagnosed cancer for Wisconsin women; #2 cause of death from cancer (lung cancer is #1)

# Get Mammogram



In mammography, each breast is compressed horizontally, then obliquely and an x-ray is taken of each position

# Koj Kawm Tauj Dab Tsi?

- Xub Nrhiav Tau, Xub Kho Tau
- Thov mus qhia ib leeg ntxiv
- Qhia koj niam, koj tus muam, koj tus viv ncaus, koj niam tais, koj, koj pog, koj tus poj niam, koj tus ntxhais, koj tus phooj ywg



# Ua Tsaug!

- Muaaj lus nug
- Xav kuaj
- Thov caw nej hu kuv tau:  
(414) 769-4900

# References

- <http://www.cancer.gov/cancertopics/understandingcancer/cancer/page10/AllPages>. Retrieved April 9, 2013.
- Ross, et al., *Cancer in the Hmong Minnesota Population*. Cancer June 15, 2003, vol. 97/Number 12
- Mills, P and Yang, R. Cancer incidence in the Hmong of Central California, United States, 1987-94. *Cancer Causes and Control* 1997, 8, 705-712